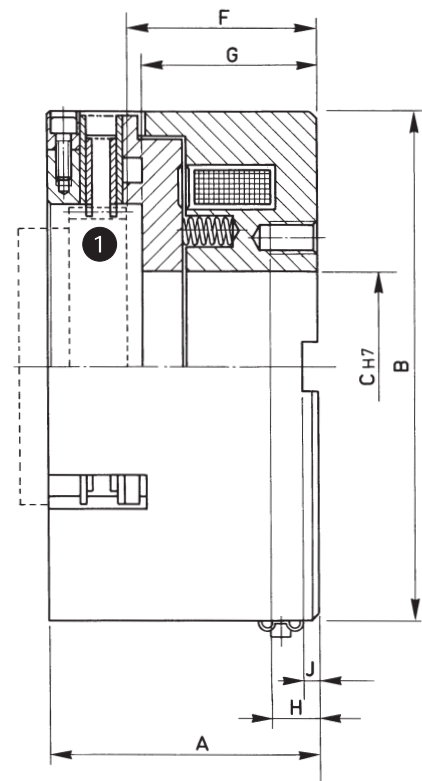
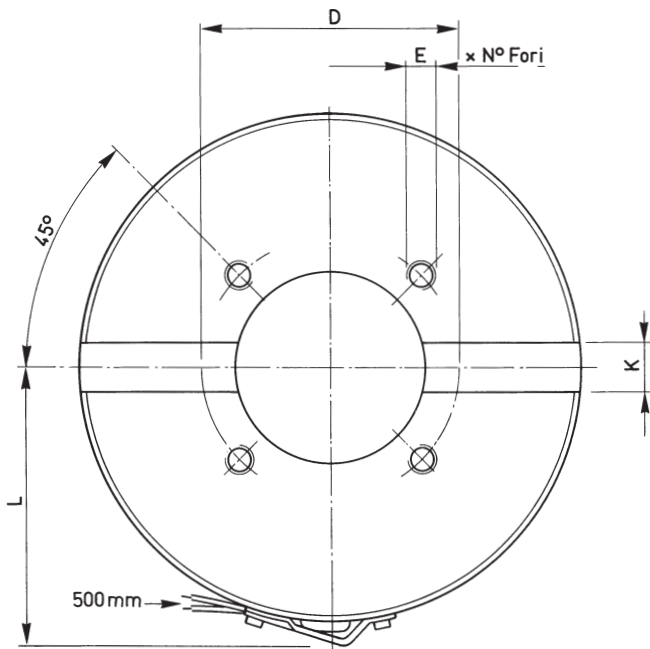


SERIE / MODEL
CODICE / CODE

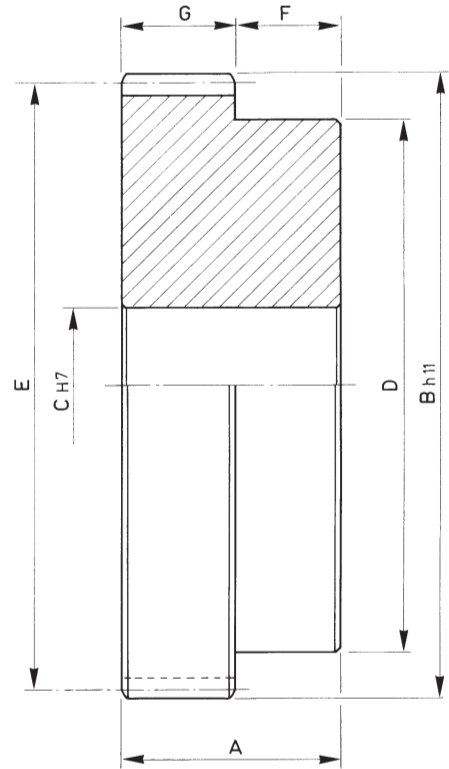
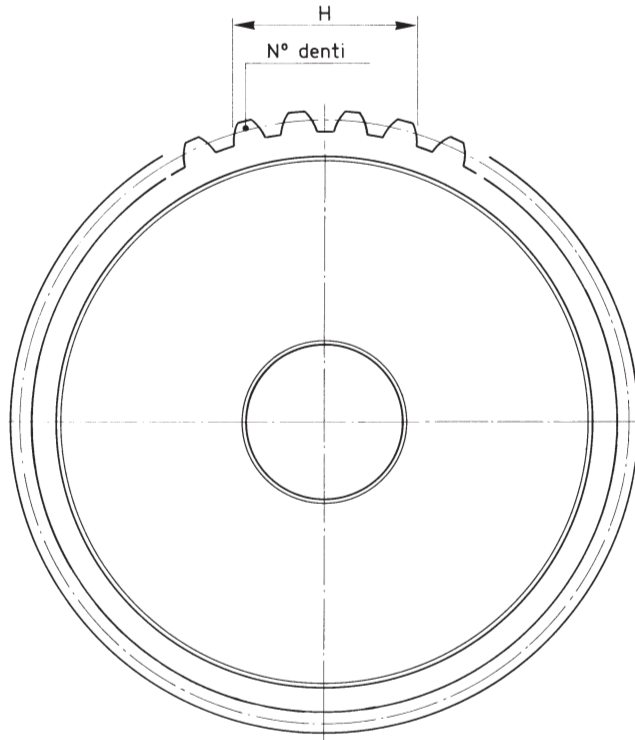
EMF-N □□□/L
06.02.□□□.01



□□□	Momenti Torques		Giri/1' R.P.M. max		Tempi inser. Build up time ms	Tempi disin. Decay time ms	WATT		Peso Weight kg	Dischi interni Inter. plates N.	Mozzo Hub ①
	Mi (Nm)	Ms (Nm)	Secco Dry	Olio W/oil			20°	120°			
114	25	40	800	2800	120	70	60	42	5	2	MDF-N 114
140	50	70	600	2200	200	80	74	53	6,5	2	MDF-N 140
166	100	140	400	1800	280	90	98	70	13	3	MDF-N 166
195	200	260	300	1400	360	100	140	100	20	3	MDF-N 195
230	300	450	200	1400	450	120	190	135	26,5	5	MDF-N 230
255	600	900	100	1400	500	130	190	137	28,5	6	MDF-N 255

□□□	A	B	C	D	E n° x Ø	F	G	H	J	K	L
114	71	114	42	58	4 x M8	56	51	10	3	12	65
140	78	140	52	72	4 x M8	59	54	12	5	14	78
166	88	165	62	84	4 x M10	63	56	15	5	16	90
195	95	195	80	108	4 x M12	69	61	15	6	20	105,5
230	109	230	90	126	4 x M12	76,5	72	18	6	20	123
255	119	255	100	142	4 x M16	83	78	20	6	20	136

SERIE / MODEL	MDF-N □□□
CODICE / CODE	45.04.□□□.01



□□□	A	B	C		D	E	F	G	m modulo module	z n. denti n. teeth	H		α	Per freno For brake EMF-N.../L	Per frizione For clutch EMC-N.../L
			min.	max.							max.	min.	n. denti n. teeth		
114	30	72,5	20	40	60	70	20,5	9,5	2,5 / 1,25	28	26,71	27,67	4	20°	114
140	30	87,5	25	55	75	85	17	13	2,5 / 1,25	34	26,92	26,87	4	20°	140
166	35	105	30	65	90	102	17	18	3 / 1,5	34	32,31	32,26	4	20°	166
195	40	123	35	80	105	120	22	18	3 / 1,5	40	41,41	41,36	5	20°	195
230	45	147	40	100	130	143,5	22	23	3,5 / 1,75	41	48,38	48,33	5	20°	230
255	50	164	45	115	145	160	23,5	26,5	4 / 2	40	55,26	55,21	5	20°	255